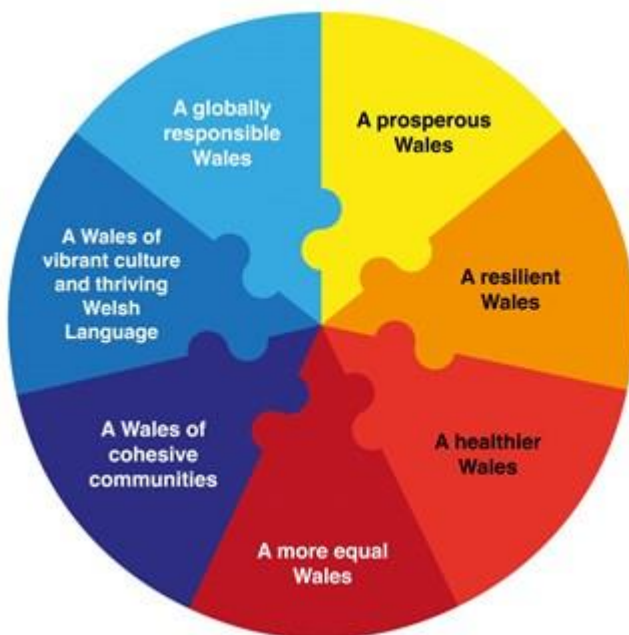


CAIA PARK COMMUNITY COUNCIL



Annual report on the Well-Being of Future Generations Act (Wales) 2015 for 2019-20



About this report

Wales faces a number of challenges now and in the future, such as climate change, poverty, health inequalities and jobs and growth. To tackle these we need to work together. To give current and future generations a good quality of life we need to think about the long-term impact of the decisions we make.

The Well-being of Future Generations (Wales) Act 2015 gives a legally binding common purpose – the seven well-being goals – for national government, local government, local health boards and other specified public bodies. It details the ways in which specified public bodies must work and work together to improve the well-being of Wales.

This report describes how Caia Park Community Council has contributed to the seven well-being goals for the community.

Wrexham Public Service Board (PSB) (www.wrexhampsb.org)

The Community Council, because it is a larger community council, is also required to ensure that it complies with and contributes to the objectives of the Local Well-Being Plan 2018-2023 as produced by the Wrexham Public Services Board. The Public Service Board (PSB) published its first annual report in June 2019 detailing progress on its determined objectives. The PSB have agreed 15 objectives but for 2018-19 focussed on 2 main objectives:

- All people have opportunities to learn and develop throughout their lives
- Children and young people are given a healthy start in life

They also agreed to focus on two or three additional objectives each year over the five- year plan period covering all 15 by 2023. In Year 1 these were:

- People have positive mental health
- People can live healthily, happily and independently in their old age
- People are able to make healthy choices.

The challenge for the Community Council is to demonstrate how it can make a positive contribution given that these objectives are strategically determined and of more relevance to the staffed larger statutory bodies who can more effectively influence their progress. All community councils have their own local priorities which are important to their communities as well as having to manage within an agreed budget. Budgetary pressures, which are exacerbated by the cost of devolved functions previously funded by the principal authority, can create tensions and limit what a community council can be realistically expected to provide. Additionally, to date, there has been no clear communication with the community council sector from the PSB or advice on how the sector can meaningfully contribute to the objectives.

The Community Council has therefore focussed on contributing to some of the 15 objectives in the PSB plan whilst “mapping” its activities within the seven well-being goals. The other 10 objectives within the five-year plan are:

- The town is vibrant and welcoming
- There are good employment opportunities in Wrexham
- There is a range of things for people to do in their spare time

- The economy in rural areas is well supported and can thrive
- All people have access to good quality, appropriate homes throughout their lives
- People can travel easily around the county and beyond
- The Welsh language is thriving
- Tourism supports the local economy
- The county borough is a safe place to live
- Our communities are prepared for the future.

The seven well-being goals for Wales

The well-being of Future Generations (Wales) Act 2015 outlines seven well-being goals which need to be considered when drawing up local objectives. A description of each well-being goal and the issues identified within that theme is provided below. All of the issues identified in this needs analysis are cross cutting and impact on more than one of these spheres of well-being.

Prosperous (1)	An innovative, productive and low carbon society which recognises the limits of the global environment and therefore uses resources efficiently and proportionately (including acting on climate change); and which develops a skilled and well educated population in an economy which generates wealth and provides employment opportunities, allowing people to take advantage of the wealth generated through securing decent work.
Resilient (2)	A nation which maintains and enhances a biodiverse natural environment with health functioning eco systems that support social, economic and ecological resilience and the capacity to adapt to change (for example climate change)
Healthier (3)	A society in which people's physical and mental well-being is maximised and in which choices and behaviours that benefit future health are understood
More equal (4)	A society that enables people to fulfil their potential no matter what their background or circumstances (including their socio-economic background and circumstances)
Cohesive communities (5)	Attractive, viable safe and well-connected communities
Vibrant culture and thriving Welsh language (6)	A society that promotes and protects culture, heritage and the Welsh language, and which encourages people to participate in the arts and sports and recreation.
Globally responsive (7)	A nation which, when doing anything to improve the economic, social, environmental and cultural well-being of Wales, takes account of whether doing such a thing may make a positive contribution to global well-being

Matrix showing cross-cutting themes

Some of the activities of Caia Park Community Council towards the well-being goals are cross cutting and impact on more than one of these spheres of well-being. The grids below give an interpretation of how each contribution might fit within the list of well-being goals.

Prosperous (1)	Resilient (2)	Healthier (3)	More equal (4)	Cohesive (5)	Culture (6)	Globally responsive (7)
-----------------------	----------------------	----------------------	-----------------------	---------------------	--------------------	--------------------------------

1	2	3	4	5	6	7
----------	----------	----------	----------	----------	----------	----------

1.	The Community Advice Service							
2.	Play Provision							
3.	Holiday Hunger							
4.	School crossing patrols							
5.	Maintenance and repair of public play facilities							
6.	Youth outreach work							
7.	Gardening competition							
8.	Community Litter pick							
9.	Climate change / biodiversity							
10.	Financial assistance							
11.	Pentre Gwyn Community Centre							
12.	Crime prevention and reduction							
13.	Community Agent							
14.	Competent Council							

1. Community Advice Service

The Community Council invests in providing a free advice service for all residents of Caia Park. There are twelve sessions per week operated primarily from the Community Council offices with two sessions being run from Caia Park Partnership. In addition, four appointments per week are offered for the completion of certain complex benefit forms (PIP, DLA etc).

Advice offered can cover any benefit related or debt issue as well as more generalist advice on any number or range of topics. It is an open-door service with the sessions run on a “first come first served basis”. It is also authorised to issue food bank vouchers to eligible residents and complete debt relief orders.

The costs of the service are met entirely by the Community Council (approx. 42% of the total Council income) although the Advice Workers do provide two sessions per week for a neighbouring council on a cost recovery basis. Clearly, To provide an efficient service there is a requirement for appropriate administrative and I.T. support with specially commissioned computer software packages. The service is delivered by 1 full time and three part time staff. (2.35 full time equivalent)

In reporting year 2018-19, the Advice Service transferred a computerised recording system for case notes and client's details during the year. In the year Advice Workers have worked with Wrexham County Borough Council Housing Estate Office and have been able to prevent 50 evictions, they have also worked with Council Tax recovery preventing 31 accounts being sent for enforcement by Enforcement Agents (Bailiffs) and have stopped 27 Enforcement Agents from collection on the door step. A total of 31 Debt Relied Orders have been processed for clients.

The total number of client visits to the service was 1638 as follows:

Clients from Wards

Cartrefle	280
Queensway	613
Smithfield	148
Whitegate	233
Wynnstay	364
Total	1638

From the assistance offered, financial gains to clients over the year amounted to over £2.6m. Throughout the year, 515 clients presented with debts of £1.422m of which £573.5k for 63 clients was successfully written off.

2. Play Provision

In 2019-20 the Community Council have funded play sessions located at Gwenfro Valley (Whitegate Ward) and The Venture (Wynnstay Ward) as these are both established play settings. The sessions amount to two per week at each location with some additional ones over the Summer holiday period at Gwenfro Valley.

The Community Council agreed to support play provision when the Welsh Government Communities First funding ended which resulted in the Gwenfro Valley Integrated Children's Centre ceasing to operate and The Venture facing financial difficulty putting the delivery of its play provision under threat. The service at Gwenfro Valley is now provided by Wrexham Play Development Team and both organisations report that the provision is well used and valued.

Expenditure on play provision represents approximately 13% of the Council's income.

3. Holiday Hunger

This is a voluntary scheme co-ordinated by the local St Marks Church and Church Area Mission. The aim is to provide young people of school age with lunches during the school holiday period. It essentially replicates the Welsh Government School Holiday Enrichment Programme (SHEP) which was not taken up by the Local Authority schools based in the community.

Distribution is discreet arranged and takes place via recognised play settings. The Community Council funds extra play sessions at Gwenfro Valley during the Summer holiday period to facilitate this.

4. School crossing patrols

In 2013, Wrexham County Borough Council decided to withdraw funding for the school crossing patrols based in the community as the volume of traffic and perceived risk did not meet their criteria. Accordingly, they invited the Community Council to fund the provision. The Community Council undertook a community survey and the school crossing patrols featured most highly as a valued service and so the Council decided to fund them.

At the time, there were three manned school crossings – Holt Road (Alexandra School) Deva Way (Hafod y Wern School) and Queensway (Gwenfro School). As the Holt Road crossing also had a pedestrian controlled traffic light crossing, it was decided to relocate that member of staff to Prince Charles Road to cover St Anne’s R.C. Primary school.

Given that there is a number of children of primary school age who make their journey to and from school unaccompanied, the Community Council have always felt that this service is important for health and safety reasons. This service costs the Community Council approximately 3% of the Council’s income.

5. Maintenance and Repair of public play facilities

In 2013, Wrexham County Borough Council decided to withdraw funding for the future maintenance, inspection and repair of equipped playgrounds within the community and offered these via a service level agreement to the Community Council or the facilities would close and any equipment removed.

There are six equipped play areas:

Bala Road	Pont Wen	Prince Charles Road
Pentre Gwyn	Abenbury Fields	Rear of Benjamin Road

Two multi use games areas:

Prince Chares Road Queensway (Whitegate)

And one skate park and chat shelter adjacent to the Queensway Sports Centre.

These costs approximately £16,000 per annum to maintain and in addition this year, the Community Council has spent £3000 on repairs to equipment largely due to vandalism. The Council actively seek grants and financial opportunities to upgrade or enhance these facilities.

6. Youth Outreach Work

The Community Council fund the provision of three sessions per week (2019-20). The outreach workers travel around the five community wards engaging with young people offering support and guidance as well as acting as a deterrent for anti-social behaviour.

The total costs for providing all children’s services (2 – 6 above) excluding any one-off grants to organisations or groups represents 27% of the Council’s income

7. Gardening competition

The Community Council sponsor an annual gardening competition which is organised on the Council's behalf by Caia Park Environmental Group. The Group invite entries from within the community under a range of categories and judging takes place in July. The winners are invited to an awards evening to receive their trophies and partake in refreshments. The competition is now in its 21st year.

8. Community litter pick

As a community bordering a large element of commercial and retail element of the town centre difficulties with littering are encountered regularly. In 2019 the Community Council in partnership with other groups and schools within the community arranged a week-long litter pick (one day for each of the five wards). Local businesses also supported the event either by providing volunteers to take part or offering incentives for those who did. This supplemented work that was already taking place with Keep Wales Tidy. It is hoped to make this an annual event.

9. Climate change/ biodiversity

The Council is conscious of the need to act responsibly and to try and influence the wider community. The Community Council has, in 2019, formally declared a climate change emergency and endeavour to use this to influence its ways of working. The Council is not responsible (as owners) for any open space or premises within the community other than its own offices and so is confined to trying to influence others. An example of this was lobbying the principal authority to reduce or cease the use of Glyphosate based weed killer in its open space areas.

The Council has recently changed its internal and external lighting to led lamps and has received presentations from Plastic Free Wrexham. It has resolved not to use single use plastics at any of its functions or meetings and has been a Fairtrade council for some years which commits the council to use Fairtrade products at its meetings.

More recently member representatives take part in the Green Infrastructure Project (led by Wrexham CBC and funded via Welsh Government). As part of this it is hoped to plant native trees in the grounds of the community council offices in 2020.

10. Financial Assistance

The Council support organisations which help people with particular needs or provide a service to Caia Park. Through the Financial Assistance Grant Scheme the Council awarded grants to voluntary or charitable groups primarily based or working in the community. In 2019/20 such groups included:

Caia Park Environ Group (Gardening comp)	500.00
Illusion Morris Dance	350.00
Nightingale House	1000.00
Pentre Gwyn / Tan y Coed Pensioners Club	1000.00

Q.P. Live Music Dev. Group	1000.00
The Venture (Bonfire)	1000.00
Urdd	50.00
Urdd National Eisteddfod 2020	200.00
Vic Studios	200.00
Wales Air Ambulance	100.00
Wrexham Allotment & Leisure Gardeners Soc	50.00

11. Pentre Gwyn Community Centre

The Community Council have supported the Trustees of the Pentre Gwyn, Tan y Coed and Coed y Bryn Residents Association to take back the freehold of the community centre which was originally funded and managed by Wrexham County Borough Council. And who leased the land from the Trustees.

In 2013 the Community Council were approached by Wrexham CBC to see if it would be interested in taking on the funding and management of this community venue as it was their intention to seek involvement with it due to a review of their discretionary services. Whilst the Community Council did not want to take direct control it agreed to underwrite any excess expenditure over income until such time as the County Borough Council withdrew its support. The Community Council then pledged a sum of £6000 per annum and continue to support the Trustees now that they have taken back the freehold with some financial support and managerial advice. The Trustees are now in a position where the centre is almost self-sufficient. They have attracted support from businesses to enhance the fabric of the building and have a good volunteer base to undertake day to day functions.

12. Crime prevention and reduction

With two of the five community wards being recognised within the Welsh Index of Multiple Deprivation (WIMD) statistics as areas of high deprivation the Council is mindful of the challenges that face the community and the need to support and work with the local Police. Police attend the monthly community council meetings and have a dedicated agenda item to bring forward crime statistics and discuss with members and issues or trends. Coupled with this, the Council have and will continue to financially support initiatives subject to finance being available.

The Community Council has also invested in mobile CCTV cameras and have recently installed a new camera within the community. Unfortunately, some of our earlier cameras have been persistently vandalised at a considerable cost to the Council.

Members attend a quarterly liaison meeting with the District Inspector and the three other "town centre" community councils.

The Community Council have agreed to fund an interactive speed sign to be located on Hightown Road and have purchased two hand-held speed monitors for deployment in the Smithfield area.

13. Community Agent Scheme

The Community Council employ a part-time Community Agent (16 hrs per week) funded by Wrexham County Borough Council via a grant they receive from Welsh Government. The role of the agent is to primarily work with the over 50 age range and identify, often by referral from other agencies such as GP practices and adult social care, those in the community who may need support or are particularly vulnerable. They are responsible for signposting residents who are seeking help to the relevant agency. They also get involved with voluntary groups such as luncheon clubs to try and minimise social isolation.

14. Competent Council

Finally, these are challenging times for community councils. The Council faces many new challenges and opportunities and it is important to be ready to be fit for the future.

A number of competency tests are emerging to help community councils determine how well equipped they are to meet the challenges ahead. These might include:

- A democracy test - % of councillors must be elected at either an ordinary election or bi-election
- A capability test – the Community Council may be required to employ a clerk with relevant professional qualifications
- A capacity test such as a minimum budget of £200k
- A governance test – the Council has sound financial management (including internal and external audit), be contactable by email and have a suitable website.

As at 2019-20 the position was:

- All councillors (14) have been declared elected with no co-options. 9 of the councillors were elected following a ballot and 4 were elected unopposed.
- The current Clerk has appropriate professional qualifications (although not CILCA) and is a County Councillor.
- The Council's budget is in excess of £200k
- The Council has sound management and financial systems. Its accounts are scrutinised by others and the Council has received an unqualified (no matters to raise) external audit report since introduced in 2001. Agendas, minutes, accounts and contact details can be found at www.caiapark.gov.uk . The community can email the Clerk at clerk@caiapark.gov.uk

Budget Estimate 2019 - 20

Estimate to 31-Mar-20

INCOME

Precept	221,020
Interest on Investments	120
Sundry Income	15
Advice Service	6,048
Ext grant Community Agent	8,774 *
Prince Charles Road	1,000

TOTAL INCOME	236,977
	=====

- Grant received March 2019 for year 2019/20 (Paid in advance)

EXPENDITURE

s.137 Donations	10,000
General Administration	38,574
Community Advice Service	104,737
Prince Charles Road	16,060
Amenities & Environment	9,500
Children's services:	
SLAs CPP	8,000
Holiday Hunger	
Play Team Gwenfro Valley	15,707
The Venture	15,288
School crossings	13,698
Playgrounds	16,068
Playground repairs	1,000
Footway Lighting	-
Misc	-
Community Agent	8,774
By-Elections	-

TOTAL EXPENDITURE	257,406
	=====

(The projected overspend will be met from Reserve Funds)

Council Members:

CARTREFLE WARD (3 MEMBERS)

Brian Halley	14 Bryn Eglwys Road, Wrexham LL13 9LA Tel: 01978 357782	(Welsh Labour)
Leanne Claire Crawford	23 Broxton Road, Wrexham LL13 9BA Tel: 01978 512098 Mobile 0781153394 E mail l.crawford579@btinternet.com	(Independent)
Carrie Harper	26 Conway Drive, Wrexham LL13 9HR Tel: 01978 291457 Mobile 07484841407 E mail Carrie1.Harper@wrexham.gov.uk	(Plaid Cymru)

QUEENSWAY WARD (3 MEMBERS)

Michelle Jaynne Downward	80 Y wern, Wrexham LL13 8TY Tel: 01978 291338 E mail chelle64.ml@gmail.com	(Independent)
Steve Jones	(Contact via Clerk of Council)	(Plaid Cymru)
Colin Powell	26 Ashbourne Ave., Gwersyllt LL11 4RR Tel: 01978 268003 E mail colin.powell@live.co.uk	(Welsh Labour)

SMITHFIELD WARD (3 MEMBERS)

Adrienne Julia Jeorrett	26 Beechley Road, Hightown Wrexham LL13 7BA Mobile 07934920269 Email adrienne.Jeorrett@wrexham.gov.uk	(Welsh Labour)
Jayne Johnson	31 Bertie Road, Wrexham LL13 8EH Tel: 01978 365644 Mobile: 07972 786640 E mail: JayneJ31@icloud.com	(Independent)
Paul Williams	32 Bernard Road, Wrexham LL13 8EL Tel: 01978 355851 Mobile: 07500142286 E mail: wpaulio@aol.com	(Plaid Cymru)

WHITEGATE WARD (3 MEMBERS)

Brian Cameron	17 Clifton Close, Wrexham LL13 0YJ Tel:01978 264795 Mobile: 07790413363 E mail: brian.cameron@wrexham.gov.uk	(Welsh Labour)
Carole Lloyd	57 Pentre Gwyn, Wrexham LL13 8YE Mobile 07522929341	(Welsh Labour)
A. Keith Gregory (Elected 2.05.19)	13 Colwyn Road, Wrexham LL13 8ET 01978 263552 Mobile 07842758614 E mail: akeithgregory@gmail.com	(Plaid Cymru)

WYNNSTAY (2)

Malcolm King	Tyddyn Draw, Llanelidan, Ruthin LL15 2TA Tel: 01824 750710 (home) 01978 355761 (work) Mobile: 07855 959489 E. mail: malcolm.king@wrexham.gov.uk	(Welsh Labour)
Mrs. Linda M. Platt	118 St David's Crescent, Wrexham LL13 8SF Mobile 07708549433 E.mail: linda.platt@the-venture.co.uk	(Independent)

=====

Clerk to the Council: Michael Morris
Caia Park Community Council, Council Offices, Prince Charles Road,
Wrexham LL13 8TH
Tel: 01978 354825 email clerk@caiapark.gov.uk

Some of our partners and associated groups

- Caia Park Partnership Ltd
- Deva House Day Centre
- The Venture
- Wrexham Play Development Team
- Wrexham County Borough Council
- Wrexham Mission Area / St Marks Church
- Local businesses including Tesco, Mecca, Sainsbury, Wrexham Motoring Supplies, Caia Barbers Shop, Co-op, Costa Coffee
- Gwenfro, Hafod y Wern and St Anne's Primary schools
- Keep Wales Tidy
- Plastic Free Wrexham Campaign
- Pentre Gwyn Community Centre (Trustees)
- Caia Park Environmental Group
- William & John Jones Trust
- Pentre Gwyn Pensioners Clun
- Nightingale House
- Urdd Eisteddfod
- QP Music Development Group
- North Wales Police & PCSO's